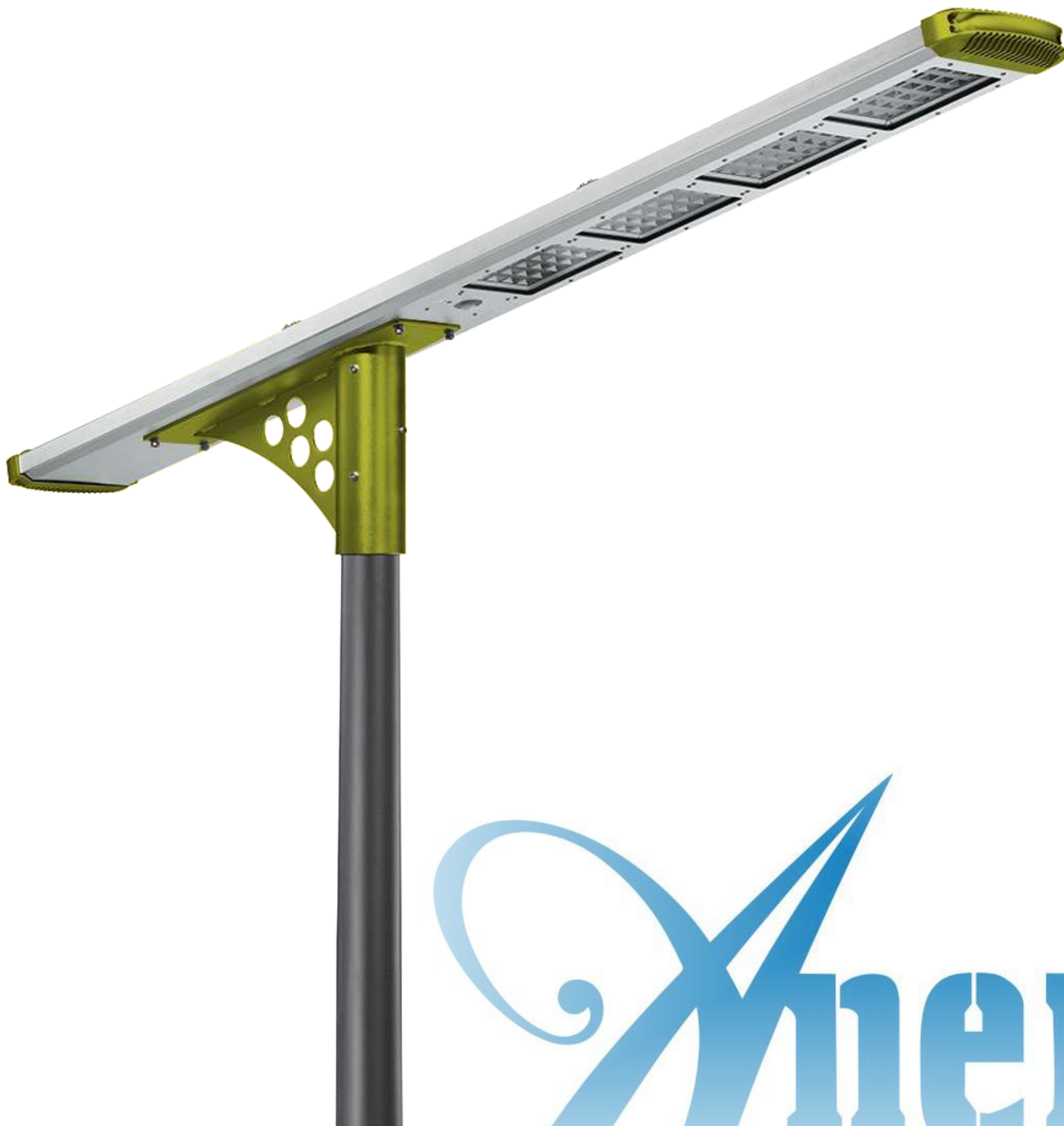


Product Name	All-in-one Solar Street Light
Product No	AN-ISSL-M2
Manual No	02
Date	2020.06

***Anern Industry Group Limited***



## Our Advantage



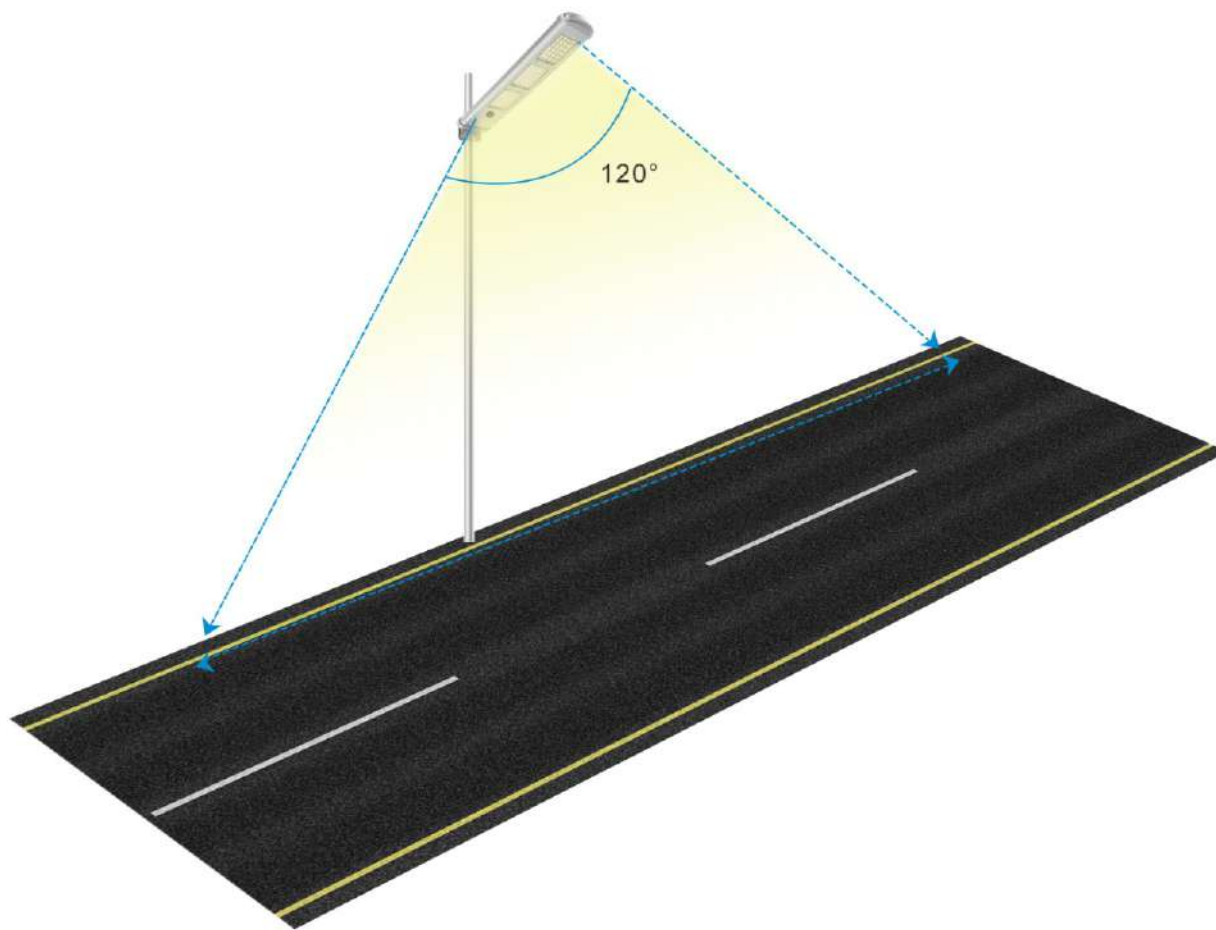
### Main features:

1. 2018 Anern patented product, beautiful appearance in integrally molded design.
2. Using high brightness Bridgelux led chip up to 190-200lm/w.
3. Big capacity and deep cycle lithium battery, more durable service life.
4. Top quality solar cells, smaller size but higher efficiency.
5. Night sensor + PIR motion sensor, support 3 nights after full charging.

## Feature

### Professional lighting design

120 degree beam angle, can provide much wider effective lighting area  
Anti-glare design, more uniform lighting



### Remote Control Model (30-80W)

**DEMO:** No matter day or night, light “on” for 1 minute.  
Only for test use.

**OFF:** No matter day or night, light “OFF” .

**L:** At night, 12hr full power.

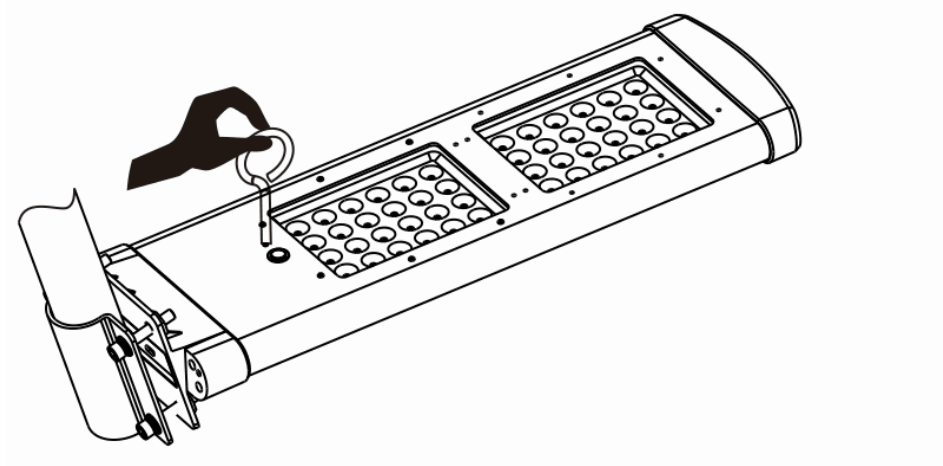
**T:** At night, 4hrs Full Power+8hrs 25%.

**M:** At night, 12hrs Motion Sensor Control.

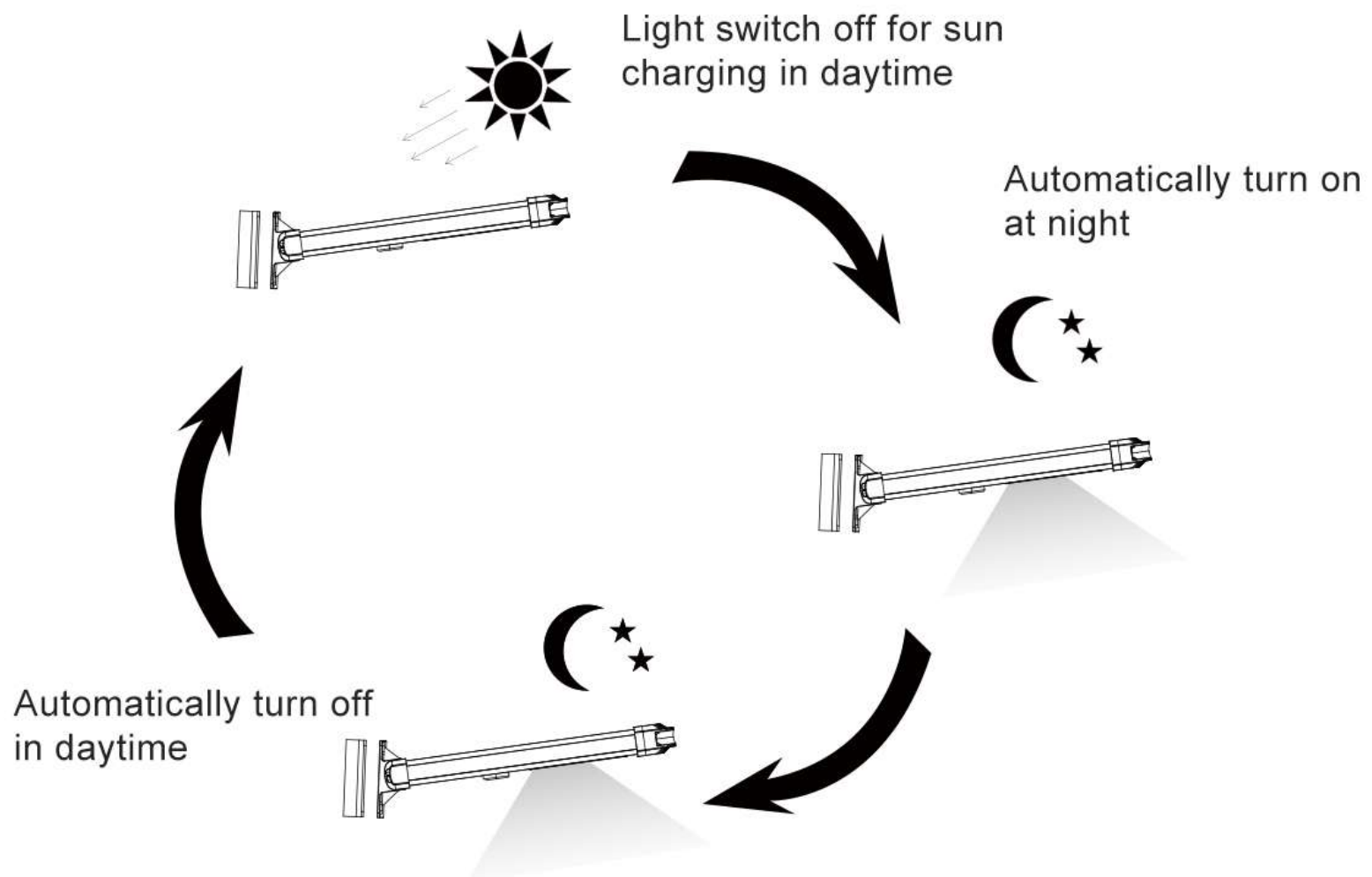
**U:** At night, 4hrs Full Power+8hrs Motion Sensor Control.



## Operation Instructions



The internal battery is locked from factory for safety shipment, so users have to use supplied key pin to click “on/off” socket to unlock the battery and lighting system





# Anern Industry Group Limited

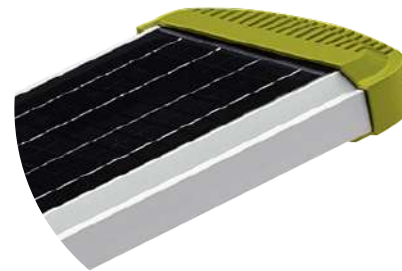
## Component Details

LiFePo4 battery, 8 years service life

No memory effect, highly efficient charge anytime

Good performance at high temperature resistance

Low self-discharge rate < 3% monthly



21% photoelectric conversion efficiency

Snow/Wind load

PID resistant

25-year progressive warranty



PIR Sensor

Sensing range up to 12 meters



Excellent Color Consistency

Brightness Decay can be as low as 3%

210lm/w, Energy Saving over 50%



## Anern Industry Group Limited

### Parameters

<b>Model</b>	M2-20W	M2-40W	M2-50W	M2-80W	M2-100W
<b>LiFePo4 Battery</b>	72WH	120WH	230WH	340WH	460WH
<b>Solar Panel(High efficiency mono)</b>	12W	25W	35W	60W	80W
<b>LED Qty</b>	24pcs	48pcs	72pcs	72pcs	96pcs
<b>Luminous Flux</b>	2000lm	3000lm	4000lm	6000lm	8000lm
<b>LED Chip</b>	Bridgelux				
<b>Solar Charging Time</b>	9-10 hours by bright sunlight				
<b>Lighting time</b>	Over 3 nights				
<b>Install height</b>	2.5-3m	3-4m	4-5m	4-6m	6-8m
<b>Sensor Time</b>	30s(adjustable)				
<b>Waterproof</b>	Ip65				
<b>Material</b>	Die-cast aluminum				
<b>Work temperature</b>	-25 to 65				
<b>Lifetime</b>	≥50000hours				
<b>Lighting Mode</b>	Customized(Light control+PIR motion sensor+Remote Control)				



# Anern Industry Group Limited

## Dimension

	length(mm)	width(mm)	thickness(mm)
20W	505	227	164
40W	808	227	164
60W	1098	227	164
80W	1553	420.5	224.5
100W	1933	420.5	224.5

## Package(for lamp)

	length(mm)	width(mm)	Height(mm)	G.W/CTNS(KG)
20W	600	310	210	4.3
40W	920	310	210	7
60W	1160	310	210	10
80W	1650	290	150	13
100W	2030	290	150	16

## Package(for bracket)

	length(mm)	width(mm)	Height(mm)	G.W/CTNS(KG)
80W	640	120	380	4
100W	640	120	380	4